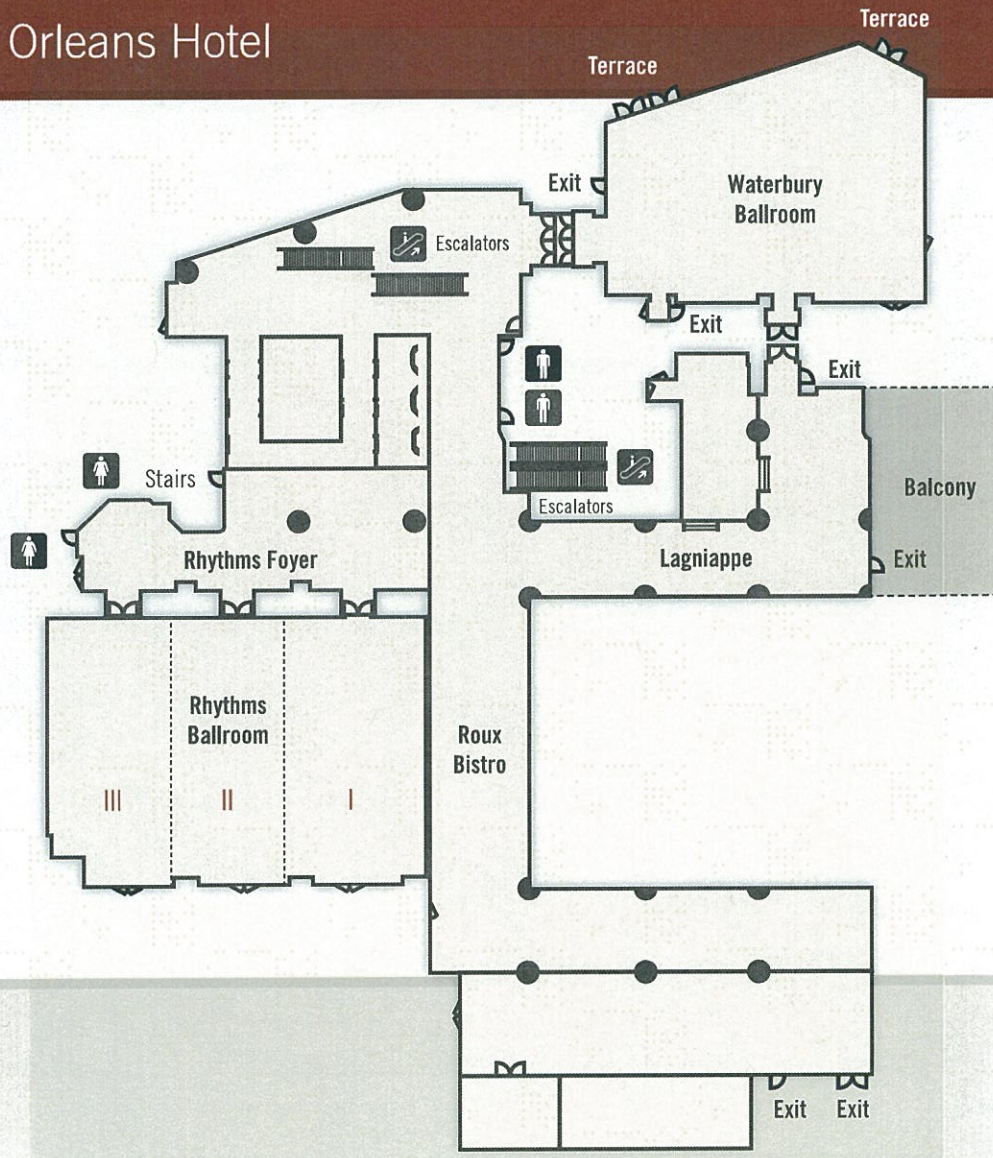


Sheraton New Orleans Hotel



Sheraton New Orleans Hotel





Capacity Chart - Second Floor

Sheraton New Orleans Hotel

Room Name	Dimensions	Area	Max	Theatre	Theatre Chevron	Classroom	Classroom Chevron	Banquet	Banquet Staggered	Conference	U-Shaped	Hollow Shape	Reception
Second Floor													
Lagniappe	77 ft x 57 ft x 14 ft	2,728 ft ²	17 ft	N/A	N/A	N/A	N/A	N/A	N/A	N/A	N/A	N/A	200
Rhythms Ballroom	61 ft x 86 ft x 13 ft	5,109 ft ²	15.5 ft	588	N/A	360	N/A	340	N/A	72	84	96	550
Rhythms I	61 ft x 32 ft x 13 ft	1,925 ft ²	15.5 ft	210	N/A	132	N/A	100	N/A	48	48	60	200
Rhythms I-II	61 ft x 58 ft x 13 ft	3,474 ft ²	15.5 ft	N/A	N/A	N/A	N/A	N/A	N/A	N/A	N/A	N/A	N/A
Rhythms II	61 ft x 26 ft x 13 ft	1,549 ft ²	15.5 ft	168	N/A	108	N/A	100	N/A	48	45	48	165
Rhythms II-III	61 ft x 54 ft x 13 ft	3,184 ft ²	15.5 ft	N/A	N/A	N/A	N/A	N/A	N/A	N/A	N/A	N/A	N/A
Rhythms III	61 ft x 28 ft x 13 ft	1,635 ft ²	15.5 ft	150	N/A	90	N/A	90	N/A	48	45	48	170
Rhythms Foyer	34 ft x 79 ft x 14 ft	1,918 ft ²	17 ft	N/A	N/A	N/A	N/A	N/A	N/A	N/A	N/A	N/A	100
Waterbury	80 ft x 63 ft x 11 ft	3,778 ft ²	17.8 ft	382	N/A	186	N/A	200	N/A	60	69	72	350

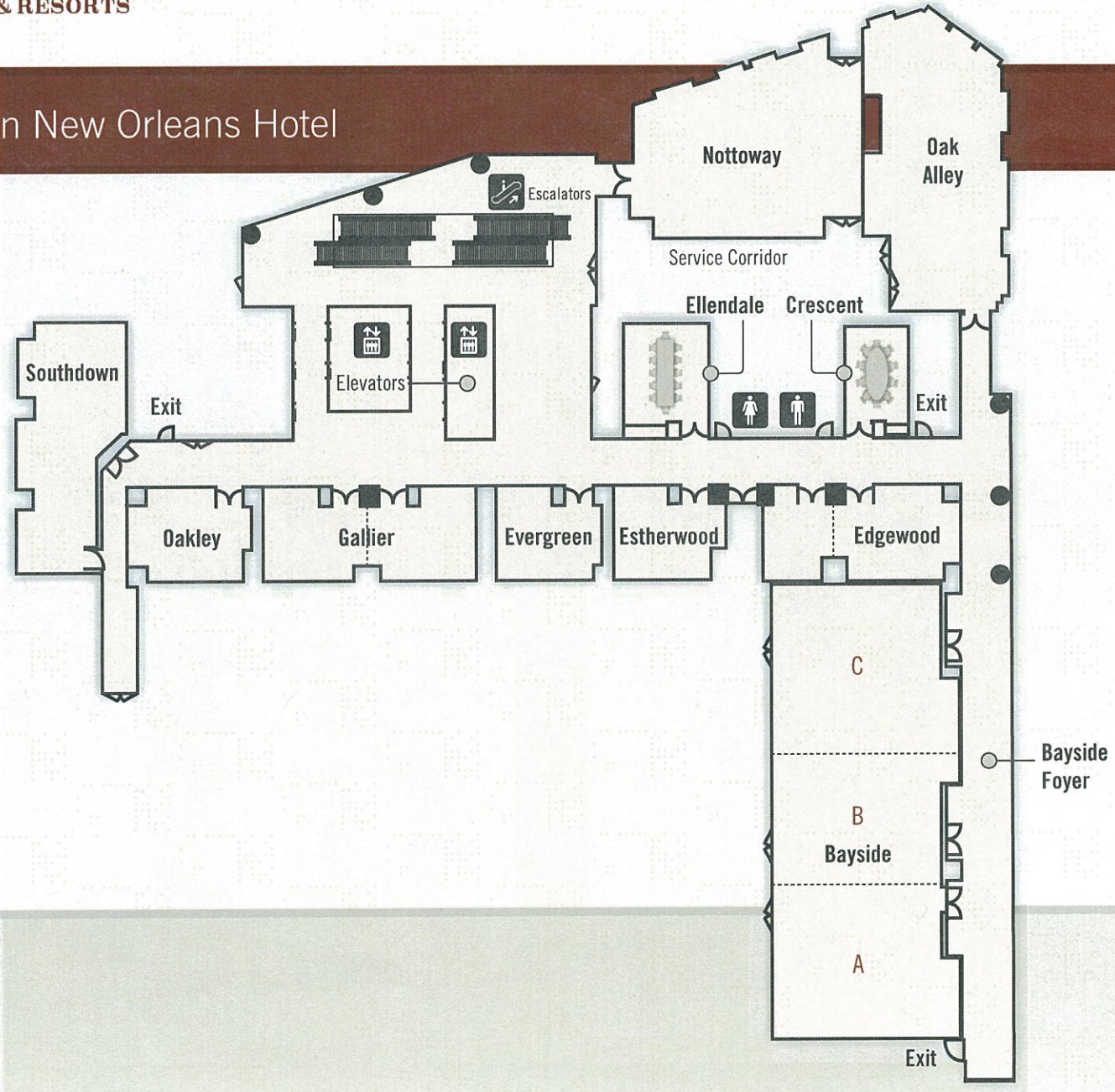
Sheraton New Orleans Hotel



Sheraton New Orleans Hotel

Room Name	Dimensions	Area	Max	Theatre	Theatre Chevron	Classroom	Classroom Chevron	Banquet	Banquet Staggered	Conference	U-Shaped	Hollow Shape	Reception
Third Floor													
Borgne	68 ft x 36 ft x 11 ft	2,118 ft ²	12.4 ft	182	N/A	132	N/A	150	N/A	48	48	60	200
Maurepas	51 ft x 45 ft x 11 ft	1,674 ft ²	12.1 ft	172	N/A	96	N/A	90	N/A	36	33	42	176
Napoleon Ballroom & Foyer	169 ft x 220 ft x 10 ft	28,039 ft ²	13.7 ft	1929	N/A	1212	N/A	1630	N/A	N/A	N/A	N/A	2800
Napoleon A1	36 ft x 27 ft x 10 ft	691 ft ²	13.7 ft	48	N/A	18	N/A	20	N/A	18	12	18	72
Napoleon A1, A2, A3	112 ft x 27 ft x 10 ft	2,720 ft ²	13.7 ft	250	N/A	171	N/A	180	N/A	60	60	78	286
Napoleon A2	35 ft x 27 ft x 10 ft	951 ft ²	13.7 ft	70	N/A	30	N/A	40	N/A	24	24	30	100
Napoleon A3	40 ft x 27 ft x 10 ft	1,078 ft ²	13.7 ft	80	N/A	63	N/A	60	N/A	24	24	30	113
Napoleon B1	36 ft x 45 ft x 10 ft	1,546 ft ²	13.7 ft	130	N/A	60	N/A	60	N/A	30	30	36	162
Napoleon B1, B2, B3	112 ft x 45 ft x 10 ft	4,944 ft ²	13.7 ft	520	N/A	324	N/A	270	N/A	60	69	96	500
Napoleon B2	35 ft x 45 ft x 10 ft	1,592 ft ²	13.7 ft	160	N/A	72	N/A	90	N/A	30	33	42	167
Napoleon B3	40 ft x 45 ft x 10 ft	1,806 ft ²	13.7 ft	180	N/A	108	N/A	90	N/A	30	39	48	190
Napoleon Ballroom	122 ft x 220 ft x 10 ft	22,551 ft ²	13.7 ft	1930	N/A	1212	N/A	1630	N/A	N/A	N/A	N/A	2255
Napoleon C1	36 ft x 45 ft x 10 ft	1,553 ft ²	13.7 ft	130	N/A	60	N/A	60	N/A	30	30	36	163
Napoleon C1, C2, C3	112 ft x 45 ft x 10 ft	4,967 ft ²	13.7 ft	500	N/A	324	N/A	270	N/A	60	69	96	522
Napoleon C2	35 ft x 45 ft x 10 ft	1,600 ft ²	13.7 ft	160	N/A	72	N/A	90	N/A	30	33	42	168
Napoleon C3	40 ft x 45 ft x 10 ft	1,814 ft ²	13.7 ft	180	N/A	108	N/A	90	N/A	30	39	48	190
Napoleon D1	36 ft x 27 ft x 10 ft	682 ft ²	13.7 ft	40	N/A	18	N/A	20	N/A	18	12	18	71
Napoleon D1, D2, D3	113 ft x 27 ft x 10 ft	2,694 ft ²	13.7 ft	165	N/A	105	N/A	170	N/A	60	60	78	285
Napoleon D2	35 ft x 27 ft x 10 ft	941 ft ²	13.7 ft	70	N/A	30	N/A	40	N/A	24	24	30	100
Napoleon D3	41 ft x 27 ft x 10 ft	1,071 ft ²	13.7 ft	80	N/A	60	N/A	60	N/A	24	24	30	112
Poydras	27 ft x 25 ft x 9 ft	553 ft ²	10.3 ft	30	N/A	24	N/A	20	N/A	18	12	18	58

Sheraton New Orleans Hotel



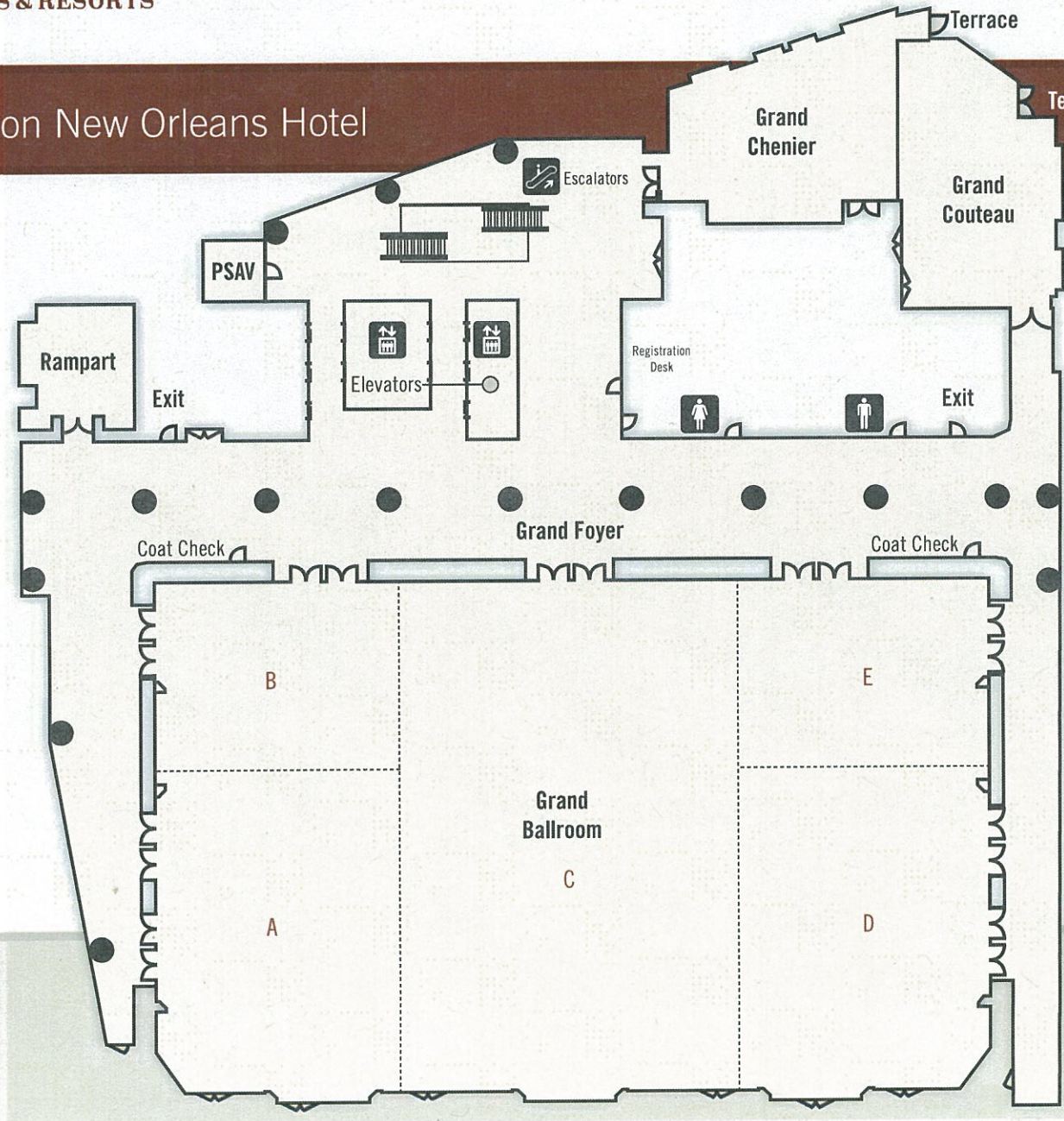


Capacity Chart - Forth Floor

Sheraton New Orleans Hotel

Room Name	Dimensions	Area	Max	Theatre	Theatre Chevron	Classroom	Classroom Chevron	Banquet	Banquet Staggered	Conference	U-Shaped	Hollow Shape	Reception
Fourth Floor													
Bayside A-C	42 ft x 101 ft x 8 ft	3,813 ft ²	8.4 ft	404	N/A	228	N/A	220	N/A	84	84	90	380
Bayside A	42 ft x 34 ft x 8 ft	1,370 ft ²	8.4 ft	126	N/A	78	N/A	90	N/A	30	33	42	140
Bayside A-B	42 ft x 63 ft x 8 ft	2,317 ft ²	8.4 ft	N/A	N/A	N/A	N/A	N/A	N/A	N/A	N/A	N/A	N/A
Bayside B	42 ft x 29 ft x 8 ft	1,093 ft ²	8.4 ft	90	N/A	51	N/A	60	N/A	24	30	36	100
Bayside B-C	42 ft x 67 ft x 8 ft	2,589 ft ²	8.4 ft	N/A	N/A	N/A	N/A	N/A	N/A	N/A	N/A	N/A	N/A
Bayside C	42 ft x 38 ft x 8 ft	1,497 ft ²	8.4 ft	126	N/A	75	N/A	90	N/A	30	33	42	150
Bayside Foyer	15 ft x 132 ft x 8 ft	1,640 ft ²	8.8 ft	N/A	N/A	N/A	N/A	N/A	N/A	N/A	N/A	N/A	160
Crescent	21 ft x 14 ft x 8 ft	317 ft ²	8.3 ft	N/A	N/A	N/A	N/A	N/A	N/A	14	N/A	N/A	33
Edgewood A-B	17 ft x 44 ft x 8 ft	771 ft ²	8.4 ft	60	N/A	30	N/A	40	N/A	24	21	24	70
Edgewood A	17 ft x 44 ft x 8 ft	267 ft ²	8.4 ft	20	N/A	9	N/A	10	N/A	10	12	N/A	20
Edgewood B	21 ft x 28 ft x 8 ft	503 ft ²	8.4 ft	40	N/A	21	N/A	30	N/A	10	15	18	50
Ellendale	25 ft x 19 ft x 8 ft	445 ft ²	8.3 ft	N/A	N/A	N/A	N/A	N/A	N/A	10	N/A	N/A	46
Estherwood	17 ft x 25 ft x 8 ft	443 ft ²	8.3 ft	40	N/A	21	N/A	30	N/A	12	12	12	40
Evergreen	20 ft x 23 ft x 8 ft	419 ft ²	8.3 ft	35	N/A	18	N/A	30	N/A	12	12	12	40
Gallier A-B	21 ft x 47 ft x 8 ft	873 ft ²	8.3 ft	72	N/A	30	N/A	50	N/A	36	39	40	88
Gallier A	21 ft x 24 ft x 8 ft	443 ft ²	8.3 ft	30	N/A	18	N/A	30	N/A	16	12	16	40
Gallier B	21 ft x 23 ft x 8 ft	429 ft ²	8.3 ft	30	N/A	18	N/A	20	N/A	16	12	16	40
Nottoway	52 ft x 45 ft x 7 ft	1,861 ft ²	8.7 ft	151	N/A	114	N/A	80	N/A	36	30	42	180
Oak Alley	67 ft x 32 ft x 8 ft	1,828 ft ²	9.2 ft	150	N/A	99	N/A	110	N/A	48	48	54	180
Oakley	21 ft x 27 ft x 8 ft	473 ft ²	8.4 ft	41	N/A	21	N/A	30	N/A	16	12	16	40
Southdown	24 ft x 55 ft x 8 ft	1,086 ft ²	8.4 ft	90	N/A	54	N/A	70	N/A	36	21	24	100

Sheraton New Orleans Hotel



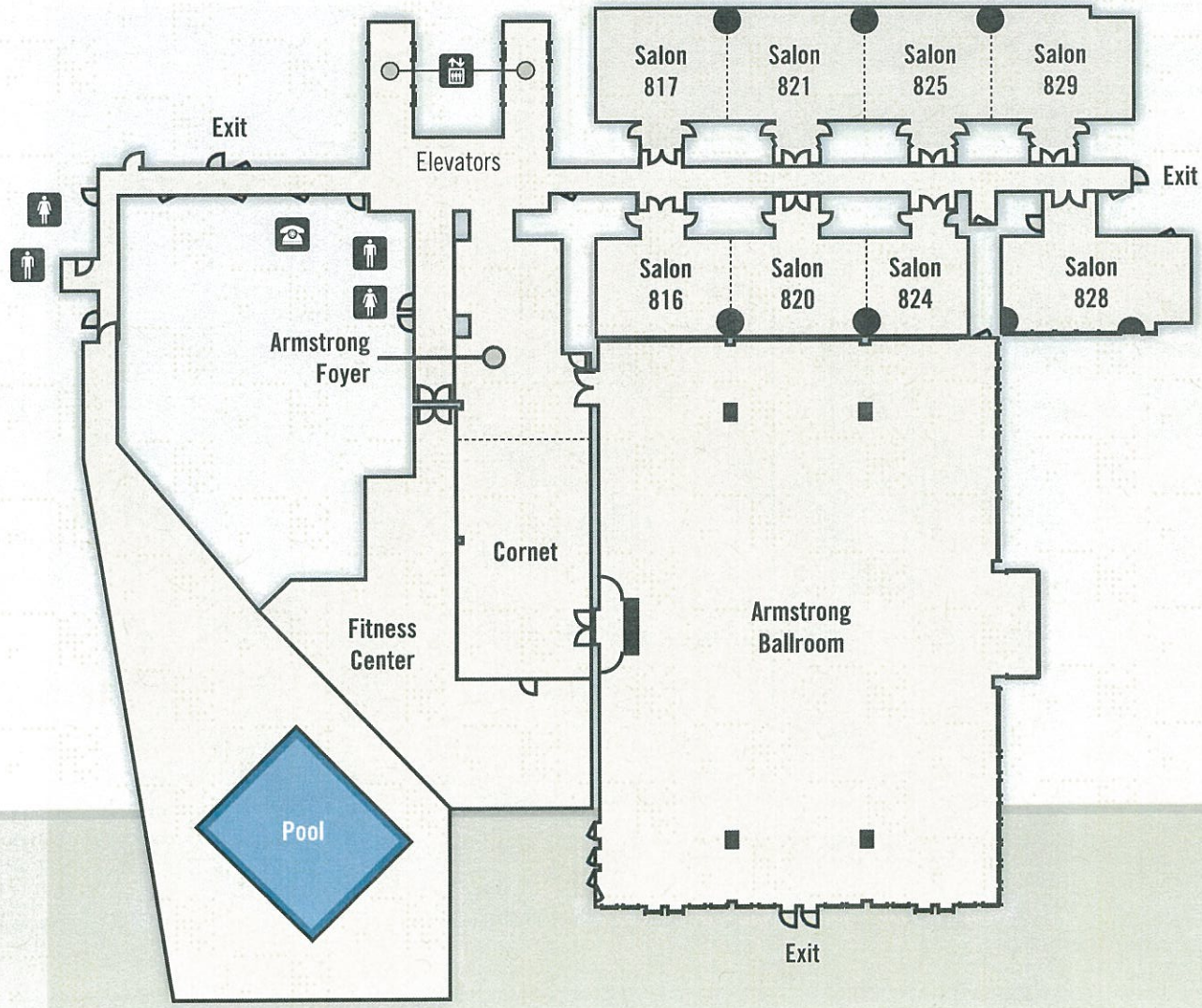


Capacity Chart - Fifth Floor

Sheraton New Orleans Hotel

Room Name	Dimensions	Area	Max	Theatre	Theatre Chevron	Classroom	Classroom Chevron	Banquet	Banquet Staggered	Conference	U-Shaped	Hollow Shape	Reception
Fifth Floor													
Grand Ballroom	110 ft x 176 ft x 17 ft	18,710 ft ²	21.3 ft	2576	N/A	1512	N/A	1350	N/A	N/A	99	144	1968
Grand Ballroom Foyer	154 ft x 219 ft x 8 ft	9,218 ft ²	10.1 ft	N/A	N/A	N/A	N/A	N/A	N/A	N/A	N/A	N/A	900
Grand Foyer A-B	134 ft x 90 ft x 8 ft	4,156 ft ²	10.1 ft	N/A	N/A	N/A	N/A	N/A	N/A	N/A	N/A	N/A	N/A
Grand Foyer B	134 ft x 90 ft x 8 ft	1,717 ft ²	10.1 ft	N/A	N/A	N/A	N/A	N/A	N/A	N/A	N/A	N/A	N/A
Grand Foyer C	37 ft x 52 ft x 8 ft	1,574 ft ²	10.1 ft	N/A	N/A	N/A	N/A	N/A	N/A	N/A	N/A	N/A	N/A
Grand Foyer D-E	154 ft x 77 ft x 8 ft	3,489 ft ²	10.1 ft	N/A	N/A	N/A	N/A	N/A	N/A	N/A	N/A	N/A	N/A
Grand Foyer E	30 ft x 50 ft x 8 ft	1,339 ft ²	10.1 ft	N/A	N/A	N/A	N/A	N/A	N/A	N/A	N/A	N/A	N/A
Grand A	110 ft x 176 ft x 17 ft	3,514 ft ²	21.3 ft	352	N/A	252	N/A	240	N/A	54	72	88	350
Grand A-B	110 ft x 52 ft x 17 ft	5,482 ft ²	21.3 ft	N/A	N/A	N/A	N/A	N/A	N/A	N/A	N/A	N/A	N/A
Grand A-C	110 ft x 176 ft x 17 ft	13,094 ft ²	21.3 ft	N/A	N/A	N/A	N/A	N/A	N/A	N/A	N/A	N/A	N/A
Grand B	110 ft x 176 ft x 17 ft	1,961 ft ²	21.3 ft	192	N/A	90	N/A	120	N/A	36	39	48	200
Grand C	110 ft x 176 ft x 17 ft	7,612 ft ²	21.3 ft	850	N/A	456	N/A	450	N/A	N/A	102	132	800
Grand C-E	110 ft x 176 ft x 17 ft	13,228 ft ²	21.3 ft	N/A	N/A	N/A	N/A	N/A	N/A	N/A	N/A	N/A	N/A
Grand D	70 ft x 53 ft x 17 ft	3,607 ft ²	21.3 ft	352	N/A	252	N/A	240	N/A	54	72	88	350
Grand D-E	110 ft x 176 ft x 17 ft	5,617 ft ²	21.3 ft	N/A	N/A	N/A	N/A	N/A	N/A	N/A	N/A	N/A	N/A
Grand E	39 ft x 53 ft x 17 ft	2,008 ft ²	21.3 ft	192	N/A	90	N/A	120	N/A	36	39	48	200
Grand Chenier	57 ft x 45 ft x 8 ft	1,750 ft ²	8.7 ft	143	N/A	78	N/A	100	N/A	36	39	46	150
Grand Couteau	57 ft x 34 ft x 10 ft	1,591 ft ²	10.6 ft	126	N/A	84	N/A	90	N/A	42	42	46	150
Rampart	27 ft x 24 ft x 8 ft	580 ft ²	8.4 ft	40	N/A	18	N/A	20	N/A	12	18	24	50

Sheraton New Orleans Hotel





Capacity Chart - Eighth Floor

Sheraton New Orleans Hotel

Room Name	Dimensions	Area	Max	Theatre	Theatre Chevron	Classroom	Classroom Chevron	Banquet	Banquet Staggered	Conference	U-Shaped	Hollow Shape	Reception
Eighth Floor													
33-41 & 43-46 9-28													
Armstrong	85 ft x 110 ft x 10 ft	8,230 ft ²	32.2 ft	718	N/A	390	N/A	560	N/A	48	90	96	800
Cornet & Armstrong Foyer	83 ft x 25 ft x 8 ft	1,985 ft ²	8.7 ft	N/A	N/A	N/A	N/A	N/A	N/A	N/A	N/A	N/A	200
Armstrong Foyer	38 ft x 25 ft x 8 ft	840 ft ²	8.7 ft	N/A	N/A	N/A	N/A	N/A	N/A	N/A	N/A	N/A	80
Cornet	45 ft x 25 ft x 8 ft	1,146 ft ²	8.7 ft	100	N/A	48	N/A	70	N/A	30	30	40	120
Salon 816, 820 & 824	27 ft x 71 ft x 7 ft	1,473 ft ²	8.4 ft	100	N/A	75	N/A	90	N/A	42	45	48	155
Salon 816	24 ft x 26 ft x 7 ft	522 ft ²	8.4 ft	30	N/A	18	N/A	40	N/A	18	20	22	40
Salon 816 & 820	27 ft x 52 ft x 7 ft	1,069 ft ²	8.4 ft	N/A	N/A	N/A	N/A	N/A	N/A	N/A	N/A	N/A	N/A
Salon 820	27 ft x 26 ft x 7 ft	548 ft ²	8.4 ft	30	N/A	18	N/A	40	N/A	18	20	22	40
Salon 820 & 824	27 ft x 45 ft x 7 ft	951 ft ²	8.4 ft	N/A	N/A	N/A	N/A	N/A	N/A	N/A	N/A	N/A	N/A
Salon 824	24 ft x 19 ft x 7 ft	404 ft ²	8.4 ft	24	N/A	18	N/A	20	N/A	12	14	12	40
Salon 817,821,825 & 829	28 ft x 102 ft x 8 ft	2,390 ft ²	8.4 ft	208	N/A	120	N/A	140	N/A	90	N/A	N/A	230
Salon 817	27 ft x 25 ft x 8 ft	565 ft ²	8.4 ft	30	N/A	18	N/A	40	N/A	18	18	22	50
Salon 817 & 821	27 ft x 51 ft x 8 ft	1,185 ft ²	8.4 ft	N/A	N/A	N/A	N/A	N/A	N/A	N/A	N/A	N/A	N/A
Salon 817, 821 & 825	30 ft x 75 ft x 8 ft	1,767 ft ²	8.4 ft	N/A	N/A	N/A	N/A	N/A	N/A	N/A	N/A	N/A	N/A
Salon 821	30 ft x 26 ft x 8 ft	619 ft ²	8.4 ft	30	N/A	18	N/A	40	N/A	18	18	22	50
Salon 821 & 825	30 ft x 50 ft x 8 ft	1,201 ft ²	8.4 ft	N/A	N/A	N/A	N/A	N/A	N/A	N/A	N/A	N/A	N/A
Salon 821, 825 & 829	28 ft x 102 ft x 8 ft	1,824 ft ²	8.4 ft	N/A	N/A	N/A	N/A	N/A	N/A	N/A	N/A	N/A	N/A
Salon 825	30 ft x 24 ft x 8 ft	582 ft ²	8.4 ft	30	N/A	18	N/A	40	N/A	18	18	22	50
Salon 825 & 829	30 ft x 51 ft x 8 ft	1,205 ft ²	8.4 ft	N/A	N/A	N/A	N/A	N/A	N/A	N/A	N/A	N/A	N/A
Salon 829	30 ft x 27 ft x 8 ft	623 ft ²	8.4 ft	30	N/A	18	N/A	30	N/A	18	18	22	50
Salon 828	27 ft x 36 ft x 7 ft	733 ft ²	8.5 ft	56	N/A	36	N/A	40	N/A	24	27	28	60