



## DOTD's LPA Program

You can visit Louisiana DOTD's Local Public Agencies (LPA) Program here:

[bit.ly/DOTDLPA](http://bit.ly/DOTDLPA)

The DOTD's LPA Website is intended to assist the LPA know the available programs, how to obtain a project, and information that will assist in fulfilling the requirements of planning, environmental clearance, design, utility certification, right-of-way acquisition, construction and maintenance.

# CONTACT

### Louisiana LTAP

Director, Rudynah Capone  
225-767-9184  
[LTAP@la.gov](mailto:LTAP@la.gov)

For more information,  
visit the Training section of  
[www.louisianaltap.org](http://www.louisianaltap.org)

Local Technical Assistance Program (LTAP)  
Louisiana Transportation Research Center  
4099 Gourrier Avenue  
Baton Rouge, LA 70808-4443  
[www.louisianaltap.org](http://www.louisianaltap.org)



# LPA

## Local Public Agency (LPA) Training Program



*The LPA Training Program was developed and implemented jointly by the Louisiana Department of Transportation and Development (DOTD), the Federal Highway Administration (FHWA) Louisiana Division, and the Louisiana Local Technical Assistance Program (LTAP).*



# LPA COURSES

## LPA Qualification Core Training

13 PDHs (2-Day Class)

This class is required for all project sponsors and their consultants to be qualified to participate in the state and federal programs on future transportation projects. Administrative and financial managers with responsibility for processing engineer and contractor invoices and submittal of reimbursement requests as well as maintaining required documentation are recommended to attend.

### KEY TOPICS:

- LPA Project Funding / Available Programs
- Responsible Charge / Project Planning
- Entity-State Agreement / Working with LADOTD
- Project Reporting / Project Documentation
- Procuring Design Engineers
- Project Administration
- Project Development and Design Process
- Invoicing / Reimbursement / Disbursement
- Plans, Specifications and Estimates (PS&E)
- Bid and Construction Process
- Oversight of CE&I
- Management and oversight of CE&I

## LPA Construction, Engineering, and Inspection (CE&I) 7 PDHs

This class is intended for LPA Construction Project Personnel, engineers who serve as the LPA Project Engineer (PE), and the Responsible Charge.

### KEY TOPICS:

- Construction Administration Overview
- Contract Administration for Work zone Safety
- Site Manager / Materials and Testing
- Construction Payment and Project Closeout
- Complying with federal requirements

For more information, visit [www.louisianaltap.org](http://www.louisianaltap.org). Find the "Training" tab and click on "LPA Training".

## Registration

Register online at:

[bit.ly/LTAPtraining](http://bit.ly/LTAPtraining)



## Course Fees

Each course costs as follows:

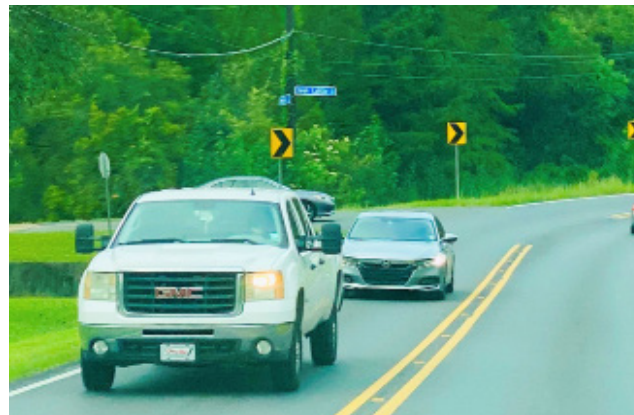
\$25 Local Agency Personnel; \$50 All Others;

Free to DOTD and FHWA employees.

For registration questions, contact Victor Lockwood at [Victor.Lockwood@la.gov](mailto:Victor.Lockwood@la.gov) or 225-767-9717.

## Subscribe with us

To receive our monthly e-news and course announcements, visit [louisianaltap.org/news.html](http://louisianaltap.org/news.html) and click "Subscribe to Local Connections".



# Why Take the LPA Training?

The primary goal of the LPA Training Program is to increase the efficiency of project delivery for local transportation projects that utilize state and federal funds by helping local agency personnel understand and implement requirements that are associated with these programs.

Any local public agency that utilizes federal and state transportation dollars is encouraged to attend the LPA courses.

The LPA Qualification Core Training is required.

The CE&I course is optional, which is intended for any project personnel or engineer who serves as "Project Engineer" or "Responsible Charge" throughout the project delivery process.

To know if we have any classes scheduled in your area, please visit the "Training" tab of the LTAP Center's website [www.louisianaltap.org](http://www.louisianaltap.org).

